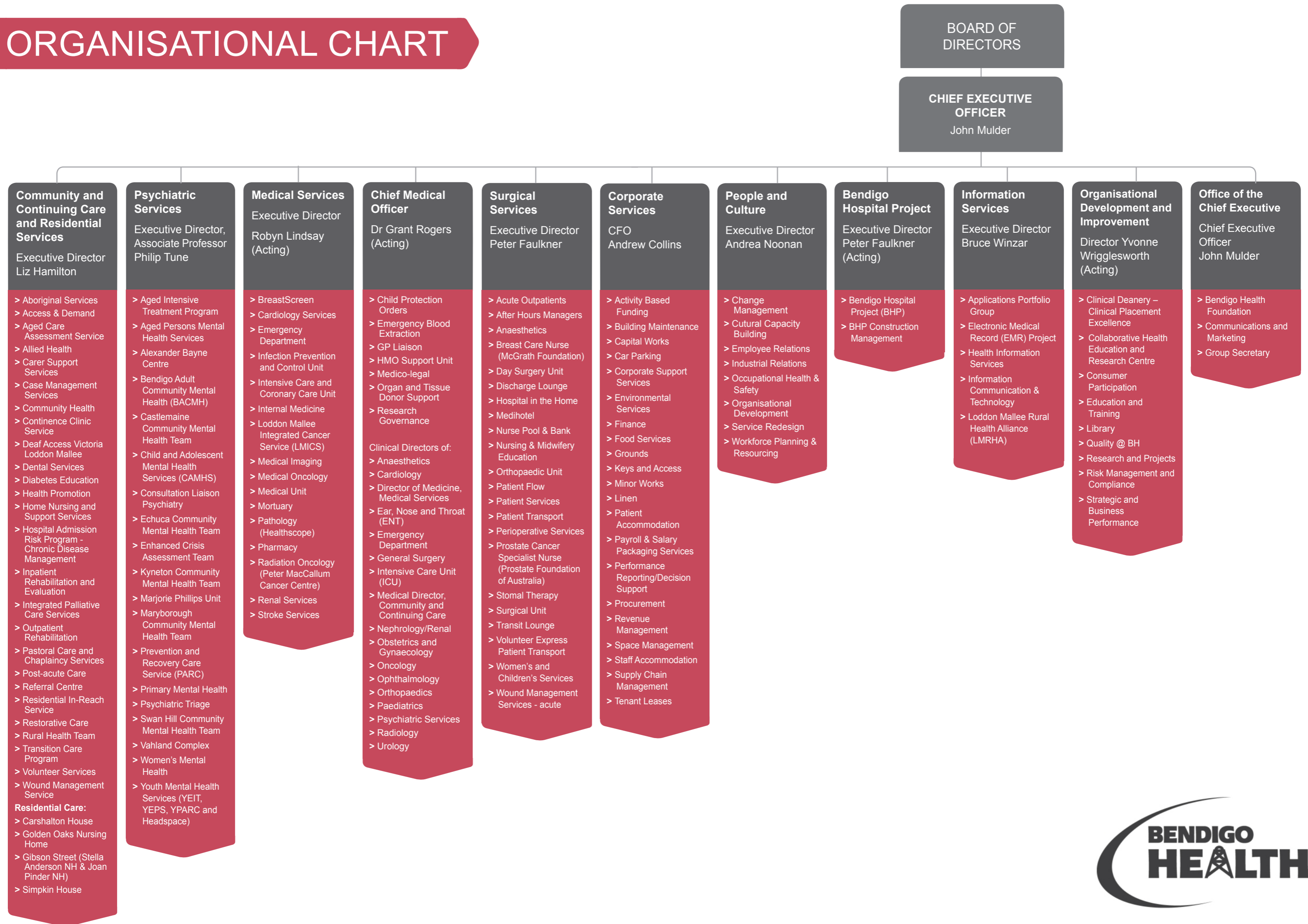


ORGANISATIONAL CHART



Community and Continuing Care and Residential Services
Executive Director Liz Hamilton

- > Aboriginal Services
- > Access & Demand
- > Aged Care Assessment Service
- > Allied Health
- > Carer Support Services
- > Case Management Services
- > Community Health
- > Continence Clinic Service
- > Deaf Access Victoria Loddon Mallee
- > Dental Services
- > Diabetes Education
- > Health Promotion
- > Home Nursing and Support Services
- > Hospital Admission Risk Program - Chronic Disease Management
- > Inpatient Rehabilitation and Evaluation
- > Integrated Palliative Care Services
- > Outpatient Rehabilitation
- > Pastoral Care and Chaplaincy Services
- > Post-acute Care
- > Referral Centre
- > Residential In-Reach Service
- > Restorative Care
- > Rural Health Team
- > Transition Care Program
- > Volunteer Services
- > Wound Management Service
- Residential Care:**
 - > Carshalton House
 - > Golden Oaks Nursing Home
 - > Gibson Street (Stella Anderson NH & Joan Pinder NH)
 - > Simpkin House

Psychiatric Services
Executive Director, Associate Professor Philip Tune

- > Aged Intensive Treatment Program
- > Aged Persons Mental Health Services
- > Alexander Bayne Centre
- > Bendigo Adult Community Mental Health (BACMH)
- > Castlemaine Community Mental Health Team
- > Child and Adolescent Mental Health Services (CAMHS)
- > Consultation Liaison Psychiatry
- > Echuca Community Mental Health Team
- > Enhanced Crisis Assessment Team
- > Kyneton Community Mental Health Team
- > Marjorie Phillips Unit
- > Maryborough Community Mental Health Team
- > Prevention and Recovery Care Service (PARC)
- > Primary Mental Health
- > Psychiatric Triage
- > Swan Hill Community Mental Health Team
- > Vahland Complex
- > Women's Mental Health
- > Youth Mental Health Services (YEIT, YEPS, YPARC and Headspace)

Medical Services
Executive Director Robyn Lindsay (Acting)

- > BreastScreen
- > Cardiology Services
- > Emergency Department
- > Infection Prevention and Control Unit
- > Intensive Care and Coronary Care Unit
- > Internal Medicine
- > Loddon Mallee Integrated Cancer Service (LMICS)
- > Medical Imaging
- > Medical Oncology
- > Medical Unit
- > Mortuary
- > Pathology (Healthscope)
- > Pharmacy
- > Radiation Oncology (Peter MacCallum Cancer Centre)
- > Renal Services
- > Stroke Services

Chief Medical Officer
Dr Grant Rogers (Acting)

- > Child Protection Orders
- > Emergency Blood Extraction
- > GP Liaison
- > HMO Support Unit
- > Medico-legal
- > Organ and Tissue Donor Support
- > Research Governance
- Clinical Directors of:
 - > Anaesthetics
 - > Cardiology
 - > Director of Medicine, Medical Services
 - > Ear, Nose and Throat (ENT)
 - > Emergency Department
 - > General Surgery
 - > Intensive Care Unit (ICU)
 - > Medical Director, Community and Continuing Care
 - > Nephrology/Renal
 - > Obstetrics and Gynaecology
 - > Oncology
 - > Ophthalmology
 - > Orthopaedics
 - > Paediatrics
 - > Psychiatric Services
 - > Radiology
 - > Urology

Surgical Services
Executive Director Peter Faulkner

- > Acute Outpatients
- > After Hours Managers
- > Anaesthetics
- > Breast Care Nurse (McGrath Foundation)
- > Day Surgery Unit
- > Discharge Lounge
- > Hospital in the Home
- > Medihotel
- > Nurse Pool & Bank
- > Nursing & Midwifery Education
- > Orthopaedic Unit
- > Patient Flow
- > Patient Services
- > Patient Transport
- > Perioperative Services
- > Prostate Cancer Specialist Nurse (Prostate Foundation of Australia)
- > Stomal Therapy
- > Surgical Unit
- > Transit Lounge
- > Volunteer Express Patient Transport
- > Women's and Children's Services
- > Wound Management Services - acute

Corporate Services
CFO Andrew Collins

- > Activity Based Funding
- > Building Maintenance
- > Capital Works
- > Car Parking
- > Corporate Support Services
- > Environmental Services
- > Finance
- > Food Services
- > Grounds
- > Keys and Access
- > Minor Works
- > Linen
- > Patient Accommodation
- > Payroll & Salary Packaging Services
- > Performance Reporting/Decision Support
- > Procurement
- > Revenue Management
- > Space Management
- > Staff Accommodation
- > Supply Chain Management
- > Tenant Leases

People and Culture
Executive Director Andrea Noonan

- > Change Management
- > Cultural Capacity Building
- > Employee Relations
- > Industrial Relations
- > Occupational Health & Safety
- > Organisational Development
- > Service Redesign
- > Workforce Planning & Resourcing

Bendigo Hospital Project
Executive Director Peter Faulkner (Acting)

- > Bendigo Hospital Project (BHP)
- > BHP Construction Management

Information Services
Executive Director Bruce Winzar

- > Applications Portfolio Group
- > Electronic Medical Record (EMR) Project
- > Health Information Services
- > Information Communication & Technology
- > Loddon Mallee Rural Health Alliance (LMRHA)

Organisational Development and Improvement
Director Yvonne Wrigglesworth (Acting)

- > Clinical Deanery – Clinical Placement Excellence
- > Collaborative Health Education and Research Centre
- > Consumer Participation
- > Education and Training
- > Library
- > Quality @ BH
- > Research and Projects
- > Risk Management and Compliance
- > Strategic and Business Performance

Office of the Chief Executive
Chief Executive Officer John Mulder

- > Bendigo Health Foundation
- > Communications and Marketing
- > Group Secretary

