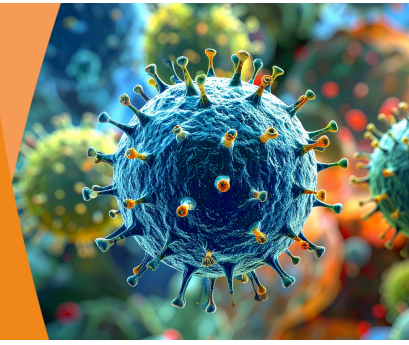


CLINICIAN URGENT NOTIFICATION

Know When to Notify



If you suspect your patient has any of the following conditions, notify the Loddon Mallee Public Health Unit immediately on **1300 651 160**

- Anthrax
- Australian Bat Lyssavirus/Rabies
- Avian influenza
- Botulism
- Cholera
- Diphtheria
- Haemolytic Uremic Syndrome
- Hepatitis A
- Invasive haemophilus influenzae type b (Hib)
- Invasive group A streptococcal disease (iGAS)
- Invasive meningococcal disease (IMD)
- Japanese encephalitis

- Legionellosis
- Listeriosis
- Hantavirus
- Middle East Respiratory Syndrome (MERS-CoV)
- Measles
- Mpox (Monkeypox)
- Murray Valley encephalitis
- Plague
- Poliovirus infection
- Severe Acute Respiratory Syndrome (SARS)
- Tularaemia
- Typhoid and paratyphoid
- Viral haemorrhagic fever



**Urgent conditions require notification within 24 hours.
It is your legal responsibility to notify.**



Visit health.vic.gov.au for the full list of notifiable conditions and online notification forms for routine notifications.

For advice or questions contact the Loddon Mallee Public Health Unit.

