

BUILDING CLIMATE-RESILIENT COMMUNITIES THROUGH REGIONAL PARTNERSHIPS

Connecting organisations to strengthen climate resilience across the Loddon Mallee.

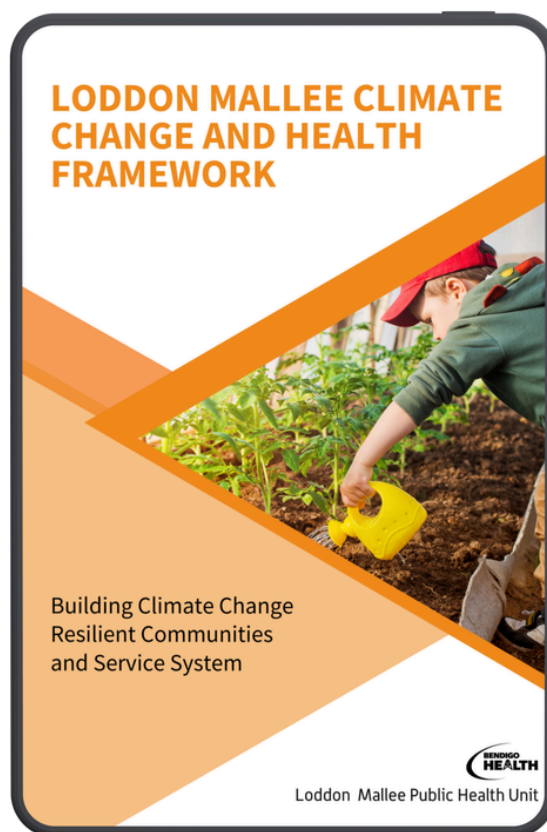
Rationale

Climate change is one of the biggest threats to public health. Rural and regional communities are already experiencing more frequent heatwaves, bushfires, floods and drought, placing greater pressure on health services and communities.

The LMPHU identified a need to strengthen regional collaboration so organisations could share knowledge, build capability and work together to improve climate resilience. This work supports the LMPHU Climate Change and Health Framework and the Victorian Public Health and Wellbeing Plan.

Objectives

The project aimed to strengthen regional partnerships, build workforce capability and support organisations to respond to the health impacts of climate change. It also aimed to improve collaboration, reduce duplication and promote a climate justice approach across the Loddon Mallee.



Loddon Mallee Climate Change and Health Framework

At A Glance

- **19** organisations collaborating across the region
- **15** health services and ACCHOs strengthening climate capability
- Shared resources and training **improved** regional collaboration
- Climate Change and Health Framework guiding **future action**

What We Did

The LMPHU established two regional collaboration networks to bring organisations together around a shared goal.

The Climate Change and Health Leaders Network connected organisations from health, local government, community services, academia and the climate sector to strengthen collaboration, share knowledge and identify opportunities for collective action.

The Health Services Climate Change and Health Community of Practice brought together health services and Aboriginal Community Controlled Health Organisations to share practical resources, learn from guest speakers and strengthen climate action across the health sector.

Both networks meet every two months and are guided by Terms of Reference. Members share resources, discuss emerging issues, promote workforce development opportunities and collaborate on projects that improve climate resilience across the region.

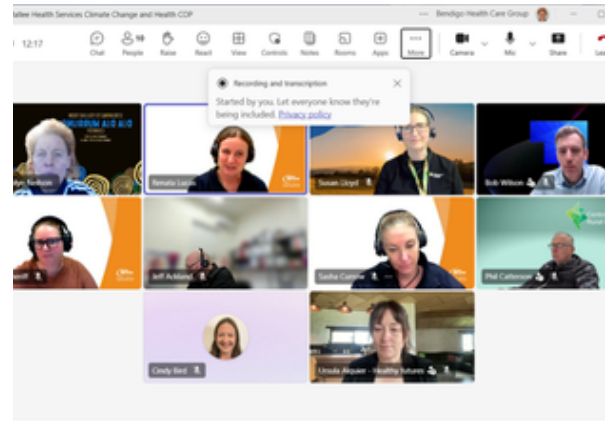
Outcomes

The project has strengthened collaboration between organisations working to address climate change and health across the Loddon Mallee.

Members have shared practical resources, climate risk assessment tools, policies, action plans and evidence to support local climate action. The networks have also promoted workforce development through training in areas including climate adaptation, disaster resilience, gender equity, Aboriginal and Torres Strait Islander self-determination and cultural safety.

Partnerships developed through the networks have improved communication, reduced duplication and supported more coordinated

regional responses. Evaluation shows members value the opportunity to learn from each other, build relationships and achieve greater impact by working together than they could individually.



Loddon Mallee Health Services Climate Change and Health Community of Practice members

Lessons learned

Regional collaboration is strongest when organisations share a common purpose and commit to working together over time. Strong leadership, executive support and regular opportunities to connect help maintain engagement and build trust.

The project also showed that sharing practical resources and local experience reduces duplication and helps organisations respond more effectively to climate-related health challenges.

Next Steps

The LMPHU will continue expanding both networks, strengthening workforce capability and supporting organisations to embed climate resilience into planning, policy and service delivery. Future work will focus on engaging more partners, sharing emerging evidence and improving evaluation to better demonstrate long-term impact.

For more information about this project, visit: [Loddon Mallee Public Health Unit / Climate Change and Health](#)

June 2026